



**SUN  
GREEN**  
HOLDINGS  
SWITCH ON THE SOLAR.

+94 - 705 - 65 14 70 / 0114 - 806 362

info@sungreenholdings.com

18/1/1, Balapokuna Place,  
Colombo 06.

www.sungreenholdings.com

Co Reg Number PV 00263952

**SOLAR PV  
GRID-TIDE SYSTEM**

**3 KW**  
NET ACCOUNTING



DESIGN, SUPPLY AND INSTALLATION OF SOLAR SYSTEM

**Price:**

Design, supply and installation of grid-tie solar PV system including necessary accessories and connection to AC distribution

Apply all necessary approval from CEB and all charges include the below price

Two-year maintenance

Option Capacity in KW	JA Solar (545w) PV Capacity	Inverter Capacity KW	Monthly Kwh Generations (KWH)		Sales Price	Discount	Discounted Price
3.3	6	3	363	396	1,525,000	50,000	1,475,000
	3300						

Required Square Feet Per Kw	60	Required Square Feet For Your System	180
-----------------------------	----	--------------------------------------	-----

**Required Square Feet For Your Installing Solar System**

Total Price Including Transport, Installation & CEB/LECO connection fee & Two years maintenance.

Note : The number of panels are subject to change as per the availability. However the agreed voltage would be guaranteed. PHONO SOLAR - CANADIAN SOLAR - PREMIERE SOLAR - JINKO SOLAR - EGING - JA SOLAR

**General Maintenance (Including cleaning of solar panels and clearing the dust deposited on the solar inverter)**

**Physical Inspection of the system**

**Functional testing (Including any software and hardware errors, web connect function)**

**Special Note : Net Accounting application will be submitted only after 100% of the payment is received by SUN GREEN HOLDINGS LANKA(PVT) LTD. The free Services, Warranties & Claims will be effected only after the final payment is received to the Company.**

### Terms of AC & DC Wire Path

1. 50 Meters Dc Red & Dc Black Cable.
2. 25 Meters Ac & Earh Cable
3. For the extra Meters Compnay Will Charge.

### Terms of sale:

100% payment is required to confirm the business & the price

### Warranty:

**JA SOLAR** Panel Manufactures Warranty: 10 years for material & workmanship, 10-year manufacturer's performance warranty for 90% of power output, and further 15 years for 80% of power output.

**SOLIS** Inverter Manufactures Warranty: 10 Years comprehensive warranty

Three Years of Comprehensive Warranty for the Complete Systems including AC / DC EARTH CABLES & **Surge Protection** Devices.

**ALUMINIUM STRUCTURE** Manufactures Warranty: 10 years

Surge Protection Devices: - **Suntree - Mersen**

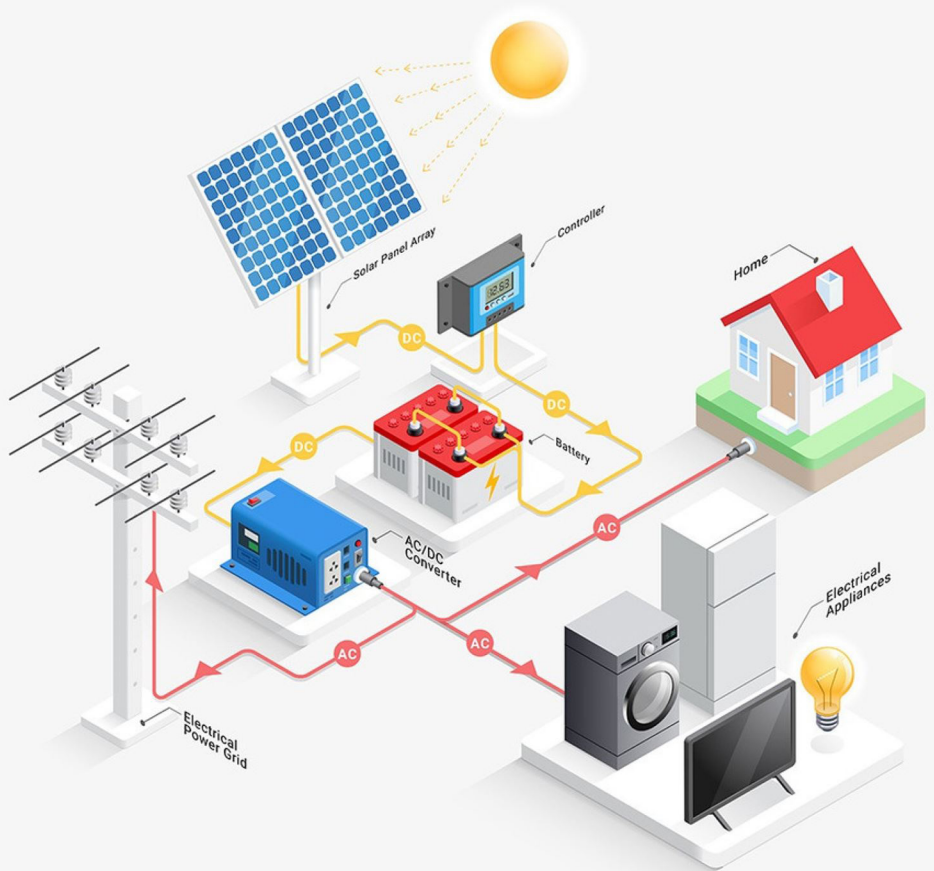
### Maintenance:

Two years' free maintenance period and training on preventive maintenance is provided.  
02 time Service .

#### Note:-

- Above pricing is done for standard mounting of the solar panels.
- It's our valued customer's responsibility and obligation to maintain the internet facility of his residence under operation to view the SOLAR SYSTEM'S functionality through on-line monitoring system for **SUN GREEN HOLDINGS** Technical Team. This will be helpful to provide you a better & an efficient service.
- The Company will not be responsible for THE LOSS OF GENERATION due to EXTREAM WHETHER CONDITIONS, POWER CUTS & SYSTEM FAILIURES of CEB / LECO.

# HOW SOLAR WORKS?





## INVERTERS

10 YEARS WARRANTY



Power and productivity  
for a better world™



## SOLAR PV PANELS

25 YEARS WARRANTY



晶澳太阳能



## SURGE PROTECTORS

3 YEARS WARRANTY



## SOLAR CABLES

10 YEARS WARRANTY



ALUMINIUM  
FOR THE PERFECT FINISH

## ALLUMINIUM

10 YEARS WARRANTY





# Harvest the Sunshine

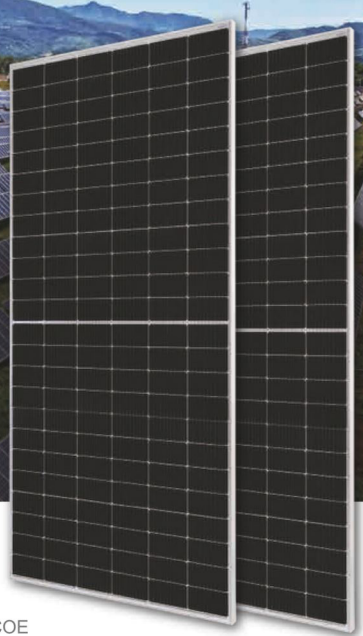
## DEEP BLUE 3.0

Mono

550W MBB Half-cell Module Series  
JAM72S30 525-550/MR/1500V

### Introduction

Assembled with 11BB PERC cells, the half-cell configuration of the modules offers the advantages of higher power output, better temperature-dependent performance, reduced shading effect on the energy generation, lower risk of hot spot, as well as enhanced tolerance for mechanical loading.



Higher output power



Lower LCOE



Less shading and lower resistive loss

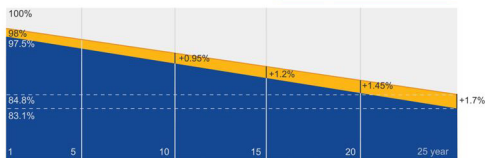


Better mechanical loading tolerance

### Superior Warranty

- 12-year product warranty
- 25-year linear power output warranty

0.55% Annual Degradation  
Over 25 years



■ New linear power warranty ■ Standard module linear power warranty

### Comprehensive Certificates

- IEC 61215, IEC 61730
- ISO 9001: 2015 Quality management systems
- ISO 14001: 2015 Environmental management systems
- ISO 45001: 2018 Occupational health and safety management systems



# JA SOLAR

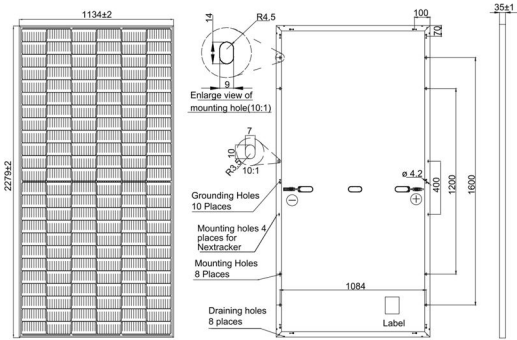
[www.jasolar.com](http://www.jasolar.com)

Specifications subject to technical changes and tests.  
JA Solar reserves the right of final interpretation.  
Shanghai JA Solar Technology Co., Ltd.





**MECHANICAL DIAGRAMS**



Remark: customized frame color and cable length available upon request

**SPECIFICATIONS**

Cell	Mono
Weight	28.6kg±3%
Dimensions	2279±2mm×1134±2mm×35±1mm
Cable Cross Section Size	4mm <sup>2</sup> (IEC) , 12 AWG(UL)
No. of cells	144(6×24)
Junction Box	IP68, 3 diodes
Connector	Genuine MC4-EVO2 QC 4.10-35/45
Cable Length (Including Connector)	Portrait: 300mm(+)/400mm(-); Landscape: 1300mm(+)/1300mm(-)
Country of Manufacturer	China/Vietnam

**ELECTRICAL PARAMETERS AT STC**

TYPE	JAM72530-525/MR/1500V	JAM72530-530/MR/1500V	JAM72530-535/MR/1500V	JAM72530-540/MR/1500V	JAM72530-545/MR/1500V	JAM72530-550/MR/1500V
Rated Maximum Power(Pmax) [W]	525	530	535	540	545	550
Open Circuit Voltage(Voc) [V]	49.15	49.30	49.45	49.60	49.75	49.90
Maximum Power Voltage(Vmp) [V]	41.15	41.31	41.47	41.64	41.80	41.96
Short Circuit Current(Isc) [A]	13.65	13.72	13.79	13.86	13.93	14.00
Maximum Power Current(Imp) [A]	12.76	12.83	12.90	12.97	13.04	13.11
Module Efficiency [%]	20.3	20.5	20.7	20.9	21.1	21.3
Power Tolerance	0~+5W					
Temperature Coefficient of Isc(β <sub>Isc</sub> )	+0.045%/°C					
Temperature Coefficient of Voc(β <sub>Voc</sub> )	-0.275%/°C					
Temperature Coefficient of Pmax(γ <sub>Pmp</sub> )	-0.350%/°C					

STC Irradiance 1000W/m<sup>2</sup>, cell temperature 25°C, AM1.5G

Remark: Electrical data in this catalog do not refer to a single module and they are not part of the offer. They only serve for comparison among different module types.  
Measurement tolerance at STC: Pmax ±3 %, Voc ±3% and Isc ±4%.

**ELECTRICAL PARAMETERS AT NOCT**

TYPE	JAM72530-525 /MR/1500V	JAM72530-530JAM72530-535JAM72530-540JAM72530-545JAM72530-550 /MR/1500V/MR/1500V/MR/1500V/MR/1500V/MR/1500V	405	408	412	416
Rated Max Power(Pmax) [W]	397	401	405	408	412	416
Open Circuit Voltage(Voc) [V]	46.05	46.18	46.31	46.43	46.55	46.68
Max Power Voltage(Vmp) [V]	38.36	38.57	38.78	38.99	39.20	39.43
Short Circuit Current(Isc) [A]	10.97	11.01	11.05	11.09	11.13	11.17
Max Power Current(Imp) [A]	10.35	10.39	10.43	10.47	10.51	10.55

**OPERATING CONDITIONS**

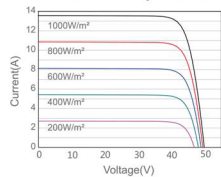
Maximum System Voltage	1500V DC (IEC)
Operating Temperature	-40°C ~ +85°C
Maximum Series Fuse Rating	25A
Maximum Static Load Front* Maximum Static Load Back*	3600Pa, 1.5 1600Pa, 1.5
NOCT	45±2°C
Safety Class	Class II
Fire Performance	UL Type 1

NOCT Irradiance 800W/m<sup>2</sup>, ambient temperature 20°C, wind speed 1m/s, AM1.5G

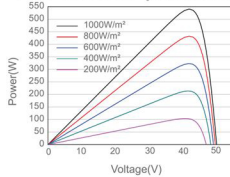
\*For NextTracker installations, Maximum Static Load, Front is 2000Pa while Maximum Static Load, Back is 2000Pa.

**CHARACTERISTICS**

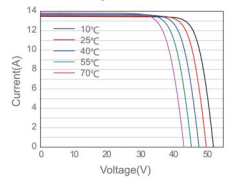
Current-Voltage Curve JAM72530-540/MR/1500V



Power-Voltage Curve JAM72530-540/MR/1500V



Current-Voltage Curve JAM72530-540/MR/1500V





# Solis-1P3K-4G

Solis Single Phase Inverters



360 degree

## Features:

- ▶ Over 97.8% Max. efficiency
- ▶ Super high frequency switching technology
- ▶ Wide voltage range and low startup voltage
- ▶ 2 MPPT design with precise MPPT algorithm
- ▶ Intergrated Export Power Manager (EPM)
- ▶ Compact and lightweight
- ▶ Friendly and adaptable connection to the grid



## Model:

Solis-1P3K-4G

## Datasheet

Model Name	Solis-1P3K-4G
<b>Input DC</b>	
Recommended max. PV power	3.5kW
Max. input voltage	600V
Rated voltage	330V
Start-up voltage	120V
MPPT voltage range	90-520V
Max. input current	11A/11A
Max. short circuit current	17.2A/17.2A
MPPT number/Max. input strings number	2/2
<b>Output AC</b>	
Rated output power	3kW
Max. apparent output power	3.3kVA
Max. output power	3.3kW
Rated grid voltage	1/N/PE, 220/230V
Rated grid frequency	50/60Hz
Rated grid output current	13.6A/13.0A
Max. output current	15.7A
Power Factor	>0.99 (0.8 leading - 0.8 lagging)
THDi	<3%
<b>Efficiency</b>	
Max. efficiency	97.8
EU efficiency	%
<b>Protection</b>	
DC reverse-polarity protection	97.1
Short circuit protection	Yes
Output over current protection	Yes
Surge protection	Yes
Grid monitoring	Yes
Anti-islanding protection	Yes
Temperature protection	Yes
Integrated DC switch	Optional
<b>General Data</b>	
Dimensions (W*H*D)	
Weight	310*543*160 mm
Topology	11.5kg
Self consumption	Transformerless
Operating ambient temperature range	<1W (night)
Relative humidity	-25 ~ +60°C
Ingress protection	0-100%
Cooling concept	IP65
Max. operation altitude	Natural convection
Grid connection standard	4000m
Safety/EMC standard	VDE-AR-N 4105, VDE V 0124, VDE V 0126-1-1, UTE C15-712-1, NRS 097-1-2, G98, G99, EN 50549-1/-2, RD 1699, UNE 206006, UNE 206007-1, IEC 61727
Features	IEC 62109-1/-2, IEC 62116, EN 61000-6-2/-3
DC connection	
AC connection	MC4 connector
Display	Quick connection plug
Communication	LCD, 2×20 Z
	RS485, Optional: Wi-Fi, GPRS