



**SUN
GREEN**
HOLDINGS
SWITCH ON THE SOLAR.

+94 - 705 - 65 14 70 / 0114 - 806 362

info@sungreenholdings.com

18/1/1, Balapokuna Place,
Colombo 06.

www.sungreenholdings.com

Co Reg Number PV 00263952

**SOLAR PV
GRID-TIDE SYSTEM**

5 KW

NET ACCOUNTING

DESIGN, SUPPLY AND INSTALLATION OF SOLAR SYSTEM

Price:

Design, supply and installation of grid-tie solar PV system including necessary accessories and connection to AC distribution

Apply all necessary approval from CEB and all charges include the below price

Two-year maintenance

Option Capacity in KW	JA Solar (545w) PV Capacity	Inverter Capacity KW	Monthly Kwh Generations (KWH)		Sales Price	Discount	Discounted Price
5.5	10	5	605	660	1,920,000	50,000	1,870,000
	5500						

Required Square Feet Per Kw	60	Required Square Feet For Your System	300
-----------------------------	----	--------------------------------------	-----

Required Square Feet For Your Installing Solar System

Total Price Including Transport, Installation & CEB/LECO connection fee & Two years maintenance.

Note : The number of panels are subject to change as per the availability. However the agreed voltage would be guaranteed. PHONO SOLAR - CANADIAN SOLAR - PREMIERE SOLAR - JINKO SOLAR - EGING - JA SOLAR

General Maintenance (Including cleaning of solar panels and clearing the dust deposited on the solar inverter)

Physical Inspection of the system

Functional testing (Including any software and hardware errors, web connect function)

Special Note : Net Accounting application will be submitted only after 100% of the payment is received by SUN GREEN HOLDINGS LANKA(PVT) LTD. The free Services, Warranties & Claims will be effected only after the final payment is received to the Company.

Terms of AC & DC Wire Path

1. 50 Meters Dc Red & Dc Black Cable.
2. 25 Meters Ac & Earh Cable
3. For the extra Meters Compnay Will Charge.

Terms of sale:

100% payment is required to confirm the business & the price

Warranty:

JA SOLAR Panel Manufactures Warranty: 10 years for material & workmanship, 10-year manufacturer's performance warranty for 90% of power output, and further 15 years for 80% of power output.

SOLIS Inverter Manufactures Warranty: 10 Years comprehensive warranty

Three Years of Comprehensive Warranty for the Complete Systems including AC / DC EARTH CABLES & **Surge Protection** Devices.

ALUMINIUM STRUCTURE Manufactures Warranty: 10 years

Surge Protection Devices: - **Suntree - Mersen**

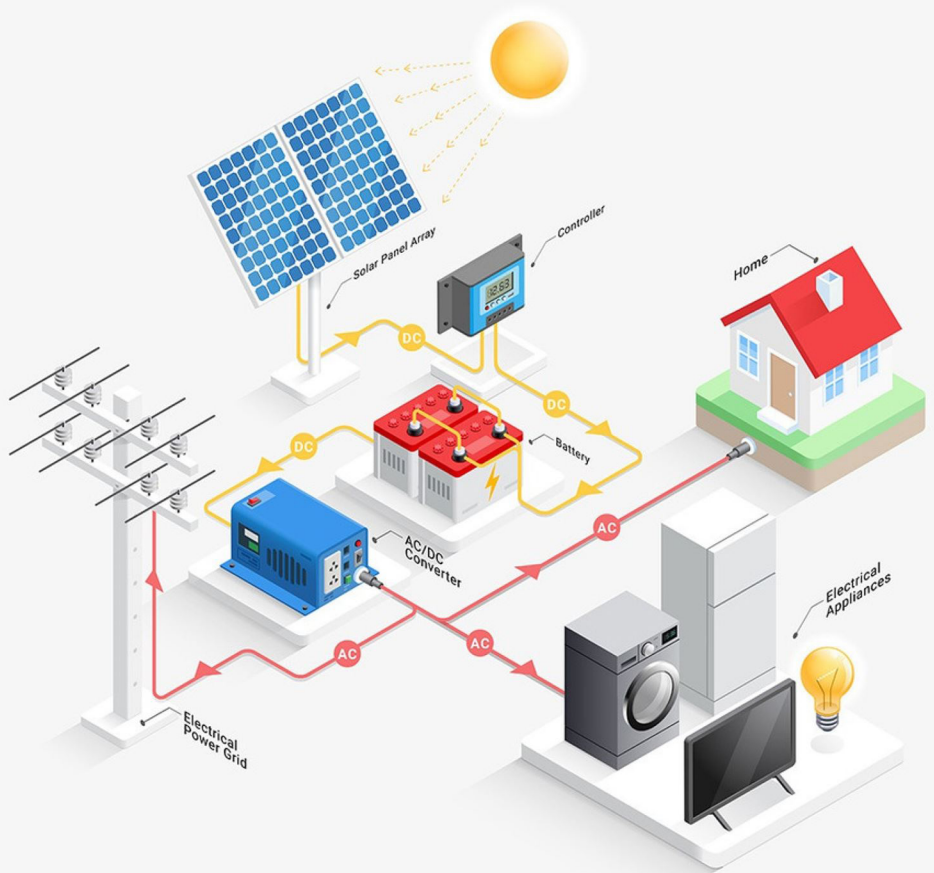
Maintenance:

Two years' free maintenance period and training on preventive maintenance is provided.
02 time Service .

Note:-

- Above pricing is done for standard mounting of the solar panels.
- It's our valued customer's responsibility and obligation to maintain the internet facility of his residence under operation to view the SOLAR SYSTEM'S functionality through on-line monitoring system for **SUN GREEN HOLDINGS** Technical Team. This will be helpful to provide you a better & an efficient service.
- The Company will not be responsible for THE LOSS OF GENERATION due to EXTREAM WHETHER CONDITIONS, POWER CUTS & SYSTEM FAILIURES of CEB / LECO.

HOW SOLAR WORKS?



INVERTERS

10 YEARS WARRANTY



Growatt

ABB

Power and productivity
for a better world™



HUAWEI

FIMER



SOLAR PV PANELS

25 YEARS WARRANTY



晶澳太阳能



SURGE PROTECTORS

3 YEARS WARRANTY



SOLAR CABLES

10 YEARS WARRANTY



sierra
cables

SWISSTEK

ALUMINIUM
FOR THE PERFECT FINISH

ALLUMINIUM

10 YEARS WARRANTY



Harvest the Sunshine

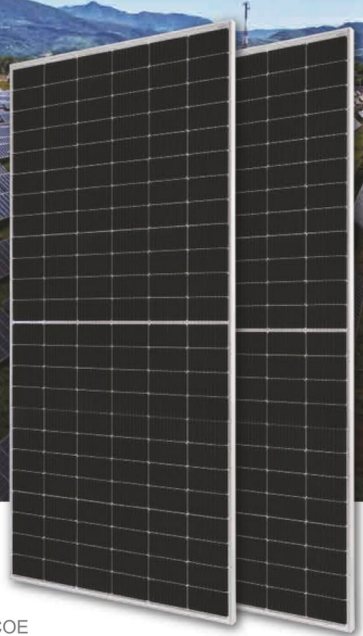
DEEP BLUE 3.0

Mono

550W MBB Half-cell Module Series
JAM72S30 525-550/MR/1500V

Introduction

Assembled with 11BB PERC cells, the half-cell configuration of the modules offers the advantages of higher power output, better temperature-dependent performance, reduced shading effect on the energy generation, lower risk of hot spot, as well as enhanced tolerance for mechanical loading.



Higher output power



Lower LCOE



Less shading and lower resistive loss

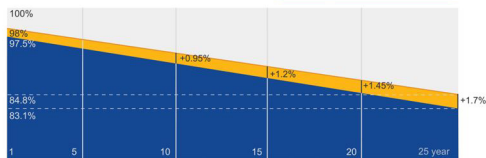


Better mechanical loading tolerance

Superior Warranty

- 12-year product warranty
- 25-year linear power output warranty

0.55% Annual Degradation
Over 25 years



■ New linear power warranty ■ Standard module linear power warranty

Comprehensive Certificates

- IEC 61215, IEC 61730
- ISO 9001: 2015 Quality management systems
- ISO 14001: 2015 Environmental management systems
- ISO 45001: 2018 Occupational health and safety management systems



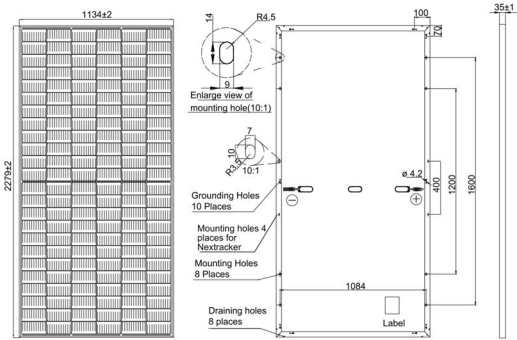
JA SOLAR

www.jasolar.com

Specifications subject to technical changes and tests.
JA Solar reserves the right of final interpretation.
Shanghai JA Solar Technology Co., Ltd.



MECHANICAL DIAGRAMS



Remark: customized frame color and cable length available upon request

SPECIFICATIONS

Cell	Mono
Weight	28.6kg±3%
Dimensions	2279±2mm×1134±2mm×35±1mm
Cable Cross Section Size	4mm ² (IEC) , 12 AWG(UL)
No. of cells	144(6×24)
Junction Box	IP68, 3 diodes
Connector	Genuine MC4-EVO2 QC 4.10-35/45
Cable Length (Including Connector)	Portrait: 300mm(+)/400mm(-); Landscape: 1300mm(+)/1300mm(-)
Country of Manufacturer	China/Vietnam

ELECTRICAL PARAMETERS AT STC

TYPE	JAM72530-525/MR/1500V	JAM72530-530/MR/1500V	JAM72530-535/MR/1500V	JAM72530-540/MR/1500V	JAM72530-545/MR/1500V	JAM72530-550/MR/1500V
Rated Maximum Power(Pmax) [W]	525	530	535	540	545	550
Open Circuit Voltage(Voc) [V]	49.15	49.30	49.45	49.60	49.75	49.90
Maximum Power Voltage(Vmp) [V]	41.15	41.31	41.47	41.64	41.80	41.96
Short Circuit Current(Isc) [A]	13.65	13.72	13.79	13.86	13.93	14.00
Maximum Power Current(Imp) [A]	12.76	12.83	12.90	12.97	13.04	13.11
Module Efficiency [%]	20.3	20.5	20.7	20.9	21.1	21.3
Power Tolerance	0~+5W					
Temperature Coefficient of Isc(β_Isc)	+0.045%/°C					
Temperature Coefficient of Voc(β_Voc)	-0.275%/°C					
Temperature Coefficient of Pmax(γ_Pmp)	-0.350%/°C					

STC Irradiance 1000W/m², cell temperature 25°C, AM1.5G

Remark: Electrical data in this catalog do not refer to a single module and they are not part of the offer. They only serve for comparison among different module types.

Measurement tolerance at STC: Pmax ±3%, Voc ±3% and Isc ±4%.

ELECTRICAL PARAMETERS AT NOCT

TYPE	JAM72530-525 /MR/1500V	JAM72530-530JAM72530-535JAM72530-540JAM72530-545JAM72530-550 /MR/1500V/MR/1500V/MR/1500V/MR/1500V/MR/1500V	Maximum System Voltage	1500V DC (IEC)
Rated Max Power(Pmax) [W]	397	401 405 408 412 416	Operating Temperature	-40 C ~+85 C
Open Circuit Voltage(Voc) [V]	46.05	46.18 46.31 46.43 46.55 46.68	Maximum Series Fuse Rating	25A
Max Power Voltage(Vmp) [V]	38.36	38.57 38.78 38.99 39.20 39.43	Maximum Static Load_Front* Maximum Static Load_Back*	3600Pa, 1.5 1600Pa, 1.5
Short Circuit Current(Isc) [A]	10.97	11.01 11.05 11.09 11.13 11.17	NOCT	45±2 C
Max Power Current(Imp) [A]	10.35	10.39 10.43 10.47 10.51 10.55	Safety Class	Class II

NOCT Irradiance 800W/m², ambient temperature 20°C, wind speed 1m/s, AM1.5G

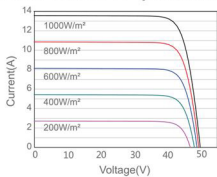
*For NexTracker installations, Maximum Static Load, Front is 2000Pa while Maximum Static Load, Back is 2000Pa.

OPERATING CONDITIONS

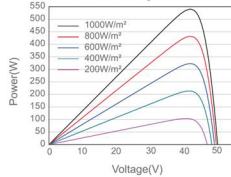
Maximum System Voltage	1500V DC (IEC)
Operating Temperature	-40 C ~+85 C
Maximum Series Fuse Rating	25A
Maximum Static Load_Front* Maximum Static Load_Back*	3600Pa, 1.5 1600Pa, 1.5
NOCT	45±2 C
Safety Class	Class II
Fire Performance	UL Type 1

CHARACTERISTICS

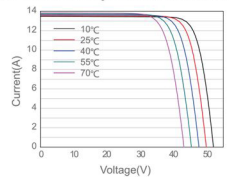
Current-Voltage Curve JAM72530-540/MR/1500V



Power-Voltage Curve JAM72530-540/MR/1500V



Current-Voltage Curve JAM72530-540/MR/1500V



Solis-3P5K-4G

Solis 4G Three Phase Inverters



Features:

- ▶ Solis 3P 4G Three Phase Range
- ▶ 160V-850V MPPT voltage range-ultra low startup
- ▶ Dual MPPT design with precise MPPT algorithm
- ▶ THDi<1.5%, low harmonic distortion against grid
- ▶ Over 98.3% Max. efficiency
- ▶ Multiple protections levels
- ▶ RS485, WiFi/LAN/GPRS (optional) interface
- ▶ WiFi monitoring available-Android and Apple App store available
- ▶ 5 years standard warranty, 20 years optional upgrade



Model:

Solis-3P5K-4G

Datasheet

Model Name	Solis-3P5K-4G
Input DC	
Max. DC input power(kW)	6
Max. DC input voltage(V)	1000
Start-up voltage(V)	180
MPPT voltage range(V)	160-850
Max. input current(A/B)	11A+11A
Max. Short Circuit current for each MPPT	17.2A+17.2A
MPPT number/Max input strings number	2/A:1; B:1
Output AC	
Rated output power(kW)	5
Max. apparent output power(kVA)	5.5
Max. output power(kW)	5.5
Rated grid voltage(V)	400
Rated grid frequency(Hz)	50/60
Grid frequency range(Hz)	47-52 or 57-62
Operation phase	Three Phase
Rated grid output current(A)	7.2
Max. output current(A)	7.9
Power Factor (at rated output power)	0.8leading ... 0.8lagging
THDi (at rated output power)	<1.5%
DC injection current	<0.5%In
Efficiency	
Max. efficiency	98.3%
EU efficiency	97.8%
MPPT efficiency	>99.5
Protection	
	%
DC reverse-polarity protection	Yes
Short circuit protection	Yes
Output over current protection	Yes
Output over voltage protection	Yes
Insulation resistance monitoring	Yes
Residual current detection	Yes
Surge protection	Yes
Grid monitoring	Yes
Islanding protection	Yes
Temperature protection	Yes
Integrated DC switch	Optional
General Data	
Dimensions(mm)	310W*563H*219D
Weight (kg)	17.3
Topology	Transformerless
Self consumption (night)	<1W (Night)
Operating ambient temperature range	-25~60°C
Relative humidity	0~100%
Ingress protection	IP65
Noise emission(typical)	<30 dBA
Cooling concept	Natural convection
Max. operation altitude	4000m
Designed lifetime	>20 years
Grid connection standard	EN50438, AS4777, VDE0126-1-1, IEC61727, G98,
Safety/EMC standard	G99 IEC62109-1/-2, AS3100, EN61000-6-1, EN61000-6-3
Features	
DC connection	MC4
AC connection	Terminal connectors
Display	LCD, 2×20 Z.
Communication connections	4 pins RS485 connector
Monitoring	WiFi or GPRS
Warranty	5 years (extend to 20 years)